



Manufactured according to OIML R60 standards

Capacity from 30000 kg to 250000 kg



- 17-4 PH STAINLESS STEEL
- HOLES FOR STANDARD SHACKLES
- COMBINED ERROR  $\leq \pm 0.08\%$
- PROTECTION CLASS IP68

CAPACITY	kg	NET WEIGHT (kg)	CODE
30000		-	TBT30000
40000		-	TBT40000
50000		-	TBT50000
60000		-	TBT60000
100000		-	TBT100000
250000		-	TBT250000

### CERTIFICATIONS

**EAC** Complies with the Eurasian Customs Union standards

**UK CA** Equivalent of the CE marking for the United Kingdom

#### CERTIFICATIONS ON REQUEST

✓ Accredia traceable calibration report

**Ex** ATEX II 1GD (zone 0-1-2-20-21-22) (CE - UK CA)

**IECEx** IECEx (zone 0-1-2-20-21-22)

**EAC Ex** Complies with the Eurasian Customs Union standards for use in potentially explosive atmospheres

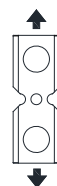
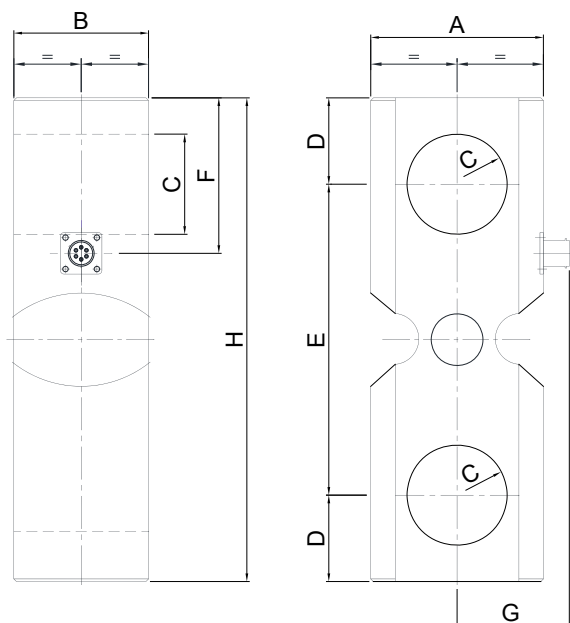
### OPTIONS ON REQUEST

#### DESCRIPTION



Two redundant strain gauges Wheatstone bridges (350 Ω) with two output cables; for dual safety systems.

### DIMENSIONS (mm)



	kg 30000 kg 40000 kg 50000 kg 60000	kg 100000	kg 250000
<b>A</b>	100	127	240
<b>B</b>	78	88	110
<b>C</b>	Ø 58	Ø 71	Ø 102
<b>D</b>	50	70	120
<b>E</b>	180	200	360
<b>F</b>	90	120	185
<b>G</b>	65	68	136
<b>H</b>	280	340	600

### TECHNICAL FEATURES

Material	AISI 420 stainless steel		
Nominal load (E max)	30000 - 40000 - 50000 - 60000 - 100000 - 250000 kg		
Combined error	≤ ±0.08%		
Protection class	IP68		
Rated output	1.0 mV/V ±0.1%	Input resistance	350 Ω ±20
Temperature effect on zero	0.005% °C	Output resistance	350 Ω ±5
Temperature effect on span	0.005% °C	Zero balance	±1%
Compensated temperature range	-20 °C / +70 °C	Insulation resistance	>5000 MΩ
Operating temperature range	-30 °C / +90 °C	Safe overload (% of full scale)	150%
Creep at nominal load in 30 minutes	0.03%	Ultimate overload (% of full scale)	300%
Max supply voltage without damage	15 V	Deflection at nominal load	0.3 mm

### ELECTRICAL CONNECTIONS

Cable length	10 m
Cable diameter	6 mm
Cores	6 x 0.14 mm <sup>2</sup>

